

Dual Sensor Camera

DC-TH2012WR

5MP

- Dual Sensor (Thermal + Sensor) IP Camera
- 3 Mode Display Support (Visual / Thermal / Overlay)
- Onvif-compliant
- White LED (Manual Operation or Temperature Alarm)
- IP67 Ingress Protection



SPECIFICATIONS

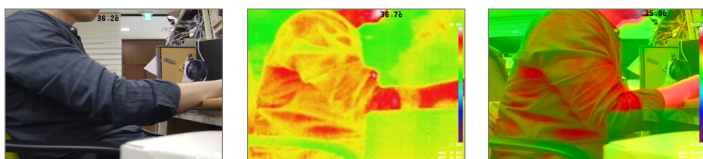
| Feature | | |
|---------------|-------------------------|---|
| Thermal Image | IR Sensor Frame Rate | < 9 Hz |
| | IR Sensor Resolution | 160 (H) x 120 (V) Pixel |
| | Spectral Range | LWIR, 8 to 14µm |
| | Field of View (FOV) | 57° HFOV, 71° Diagonal (f/1.1 Silicon Double) |
| | Temperature Sensitivity | < 50 mK (0.05°C) |
| | Temperature Range | Low Gain Mode : -10°C ~ 140°C High Gain Mode : -10°C ~ 450°C |
| Visible Image | CMOS Sensor | 1/2.9 inch Sony CMOS Progressive Scan |
| | Effective Pixels | 3096 (H) x 2202 (V) : 6.82M Pixel |
| | Min. Illumination | 0.1 Lux / F#1.2 |
| | Focal Length | 3.5mm |
| | Frame Rate | 30fps |
| | Resized Resolution | MAX : 2592 (H) x 1944 (V) Pixel MIN : 640(H) x 480 (V) Pixel |
| Others | Multi User Access | 8 (RTSP Streaming) |
| | Alarm Out | 1 Port (Dry Contact, Relay Out) |
| | Operating Temperature | 0°C ~ +50°C (32°F ~ +122°F) |
| | Power | PoE(802.3.af), DC12V |
| | Power Consumption | 5W |
| | Outdoor Ready | IP67 |
| | Dimension (W x H x D) | 80mm x 131mm x 47mm |
| Weight | 400g | |

DIMENSION

(Unit - mm)



Visual/Thermal Overlay Mode



Visual Image
Stream#1 @ 5.0MP

Thermal Image (Color)
Stream#2 @ 160 x 120

Overlaid Image (Color)
Stream#3 @ 720 x 540

Case Study



Tunnel

Coal Conveyor

Valve

Garbage Yard

Warehouse

Multiple Points of Temperature Measurement

Up to 10 Points of Simultaneous Temperature Probing



Min & Max | Temperature
+ Contrast Ratio