

# Explosion-proof IR Mini Fisheye camera

Instruction Manual

**DC-SP6C11EXY**



|                               |      |
|-------------------------------|------|
| Copyright Statement.....      | I    |
| Quality Guarantee .....       | I    |
| Security Assurance .....      | I    |
| Notice .....                  | II   |
| Safety Requirements.....      | III  |
| How to move this product..... | VIII |

## Thank you for choosing IDIS Ex products !

Please read this Instruction Manual carefully before installation and operation of this product,  
following the instructions and keep this instruction manual properly.

### Documents version

| document      |                                     |                         |
|---------------|-------------------------------------|-------------------------|
| Product name  | DC-□ Explosion-proof Fisheye Camera |                         |
| Document name | Instruction manual                  |                         |
| Version       | Date                                | Remarks                 |
| V1.0          | 2020.12.22                          | 1 <sup>st</sup> version |
|               |                                     |                         |
|               |                                     |                         |

## Copyright Statement

IDIS Co., Ltd. (hereinafter referenced as IDIS). Claims copyright ownership of the contents (including text and images) of this Instruction Manual. Any content may not be copied, transferred, modified or reproduced by any person or organization without expressed permission of IDIS.

IDIS remains the right to modify the content and technical specifications of the product in this Instruction Manual without any form of notification, to provide the newest and most advanced product. The end users can get the latest product information on our website: <http://www.idisglobal.com>.

## Quality Guarantee

For DC-□ Explosion-proof Fisheye Camera, we provide free maintain service in the guarantee period but we will ask the user to pay for the cost of labor and component in the follow conditions:

- Damage caused by improper operation that against the Instruction Manual.
- Damage caused by unauthorized disassembly.
- Thunder or other force majeure natural disasters.

If any other contracts between clients and us exist, we will follow the promise or regulation strictly.

## Security Assurance

Operation of this product complies with the following requirements:

- No adverse interference in operation;
- The operation of this product cannot be interfered by external factors even adverse interference in a certain degree.

## Notice

- The user shall not disassemble this product optionally, such as removal of top cover or bolts may cause leakage of water or creepage. Please operate the product according to the requirements in this Instruction Manual;
- Ensure this product is always used in environment with atmosphere pressure, ambient temperature and relative humidity specified in Chapter 1.6;
- To be sure the power supply complies with the requirement indicated in the nameplate;
- The internal and external grounding shall be reliable;
- Ensure the installation is firm and reliable, to avoid unexpected damage of the camera;
- It's not allowed to do any modification on qualified products, otherwise Explosion-proof performance may be affected



# Safety Requirements

Please read this Instruction Manual carefully before installation and operation of this product.

The safe service period is 1 years after date of manufacture, see nameplate of the date of manufacture.

Please read and understand associate knowledge, safety notices and cautions before put into service.

## 1. Safety cautions in installation

- Cut off the power supply before any maintenance or repair of the product. DO NOT OPEN WHEN ENERGIZED!
- Avoid opening of this product in environment where oil smoke, heavy dust, high temperature or dewing may exist. These will cause the decrease of the image definition.
- Connect the cables according to the requirement indicated in the Instruction Manual, otherwise fault may happen.
- Protect the flame proof joint in maintenance; avoid any metal fragment or other substances get access in the internal chamber.
- No disassembly or modification allowed.

## 2. Construction Safety

- The protective regulations on construction spot shall be followed strictly.
- Measurement shall be carried out immediately when any security risks found to eliminate the risks, stop construction if necessary.
- All kinds of safety facilities shall be inspected, calibrated or repaired in the event of severe weather.
- The ice, fog, rain and snow shall be removed clearly.
- Alert area shall be set and a person shall be specified to protect the area when protective casing and other safety facilities are constructed or dismantled.
- Work high above the ground may require in installation of this product, the operating personnel shall be qualified.

### **3. Power supply requirements**

- Local electrical safety standard shall be followed in installation and service of this product.
- Convenient de-energizing device shall be adopted for emergency cutting off.
- Check if the power supply is suitable for operation before start.
- Protect the power cable from trample or compressing, especially for the plug, socket and joint out from devices.

### **4. Service condition requirements**

- Please do not focus the camera to hard light (such as lamp or sunlight), which will cause too bright of the image, it's not malfunction but it does will affect the duration of the CCD (or CMOS).
- Transport, operate and store this product in applicable temperature and humidity range. Do not locate it in wet, overheated (over +60°C), extreme cold (less than -40°C) environment or area with strong electromagnetic radiation or unstable lighting conditions.
- The product shall be protected from any entry of water or other conductive fluid, which may damage the internal electrical element.
- Avoid overheated, the product shall be well ventilated.
- Avoid damage caused by compressing or violent vibration in transmission, storage or operation.
- The product shall be well packaged as new product or equivalent in transmission.
- We suggest using this product with Lightning Protection Devices.
- Internal and external grounding shall be reliable and the cross-sectional area shall be no less than 4mm<sup>2</sup>.

## 5. Operation & maintenance requirements

- Do not dismantle this product; there is no user serviceable part inside.
- Do not touch the CCD (or COMS) directly; a proper way is to blow away the dust with a blower on the lens. If it is necessary to clean it, use soft cloth with a little alcohol to wipe the lens gently. Replace the cover when not use to protect the CCD (or COMS).
- Soft, dry cloth can be used for camera body cleaning. For dirt not easy to clean, some neutral detergent can be used, clear the dirt away then dry the camera body. Corrosive agent, abrasive cleaner cannot be used for camera cleaning, they may damage the surface or even decrease the service performance.
- This product shall be installed and repaired by authorized personnel, please do not dismantle or repair it by yourself. Only manufacturer indicated components / accessories can be used when replacement is necessary.
- The CCD (or COMS) may be damaged by laser beam, it's better to avoid the camera suffering radiation of laser beam.

## 6. Environmental protection

- For components of the products made by our company may pollute the environment, such as PCB, electrical elements, plastic and lubricant, collection and control measurement shall be taken in maintenance and scrapping of the products. These pollution sources shall be delivered to the government for further treatment, no casually discard allowed, avoid any adversative effect to the environment.

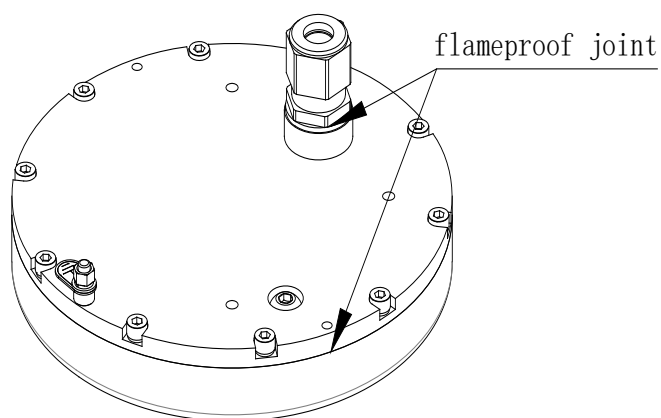
## Special announcement

- Pictures in this manual is a diagram for reference only.
- We remain the right to modify the content and technical specifications of the product in this Instruction Manual without any form of notification when the product updates, there may exist little differences after updating.
- You can get the latest software and description document by consulting the customer service department.
- Any problem in operation of this product, please contact the distributor or customer service department @ (82) 1599-3619.
- We always tried to make this instruction manual as perfect as we can, but there still may be some de-tolerance between the real data and the data we provide, if you have any questions or disputes, please refer to our company for finally explanation.
- The operator or user shall be responsible for damages or losses caused by misuse or operations do not comply with this manual.



## Ex structure instruction

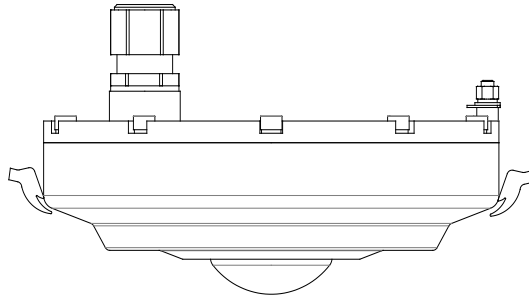
- We have made adequate consideration in flameproof enclosure design of the explosion-proof camera to prevent explosive gases getting into the inner volume, the explosion inside the enclosure cannot cause the explosion of the external explosive gases. We ensure the explosion-proof performance by strengthen enclosure the strength, adjust the length and gap of the joint of associate components and limit the maximum surface temperature.
- The enclosure is able to subject to static pressure test (1.5 times for at least 10s) specified in EN60079-1/IEC60079-1, no leakage or deformation allowed after test.
- The maximum surface temperature will no more than 80°C in normal operation.
- Tempering glass is adopted in observation port, the tempering glass shall pass the impact and thermal shock test.
- Ingress protection level:IP66,IP68(2m/2h).
- Protection the flameproof surface in maintaining of this product, otherwise the damaged flameproof surface will affect the Explosion-proof performance.
- When the product needs anti-corrosion treatment (especially carbon steel), the surface of the product will be sprayed. In this case, please wipe the non-metallic layer with a damp cotton cloth during maintenance. Pay attention to the protective coating. Do not use liquids with strong corrosion.





## How to move this product

**De-energize the product**, holding the bottom part to move it, no force on the sunshade, wiper, base; no dragging or knocking allowed.



**When the product is energized: it's NOT allowed to open, move, knock or drag this product.**

# Content

|  |    |
|--|----|
| 1. General .....   | 10 |
| 1.1. Specification .....   | 10 |
| 1.2. Characters .....  | 11 |
| 1.3. Scope .....   | 11 |
| 1.4. Mechanical parameters .....   | 12 |
| 1.5. Electrical parameters .....   | 12 |
| 1.6. Service condition.....  | 13 |
| 1.7. Electrical safety (in normal atmosphere) .....                                    | 13 |
| 1.8. Special conditions for safe use.....  | 13 |
| 2. Installation & debugging.....   | 14 |
| 2.1. Cautions before installation .....  | 14 |
| 2.2. Preparation of supports before installation .....                                 | 15 |
| 2.2.1 Support installation .....   | 15 |
| 2.3. On-spot installation and fixing .....   | 16 |
| 2.3.1 Instruction for installation of camera and wall mounting bracket.....            | 16 |
| 2.3.2 Instruction ~ and explosion-proof flexible conduit                               | 17 |
| 2.3.3 Instruction ~ and ceiling mounting bracket .....                                 | 16 |
| 2.3.4 Instruction ~ ceiling mounting bracket and explosion-proof flexible conduit..... | 16 |
| 2.4 Adjusting and operation.....   | 19 |
| 2.4.1 System connection .....  | 20 |
| 2.4.2 Cable specification .....  | 20 |
| 2.4.3 Inspection and examination before power on .....                                 | 21 |
| 2.4.4 Service status and inspection in service.....                                    | 21 |
| 2.4.5 Settings of camera, IE browser and client software .....                         | 21 |
| 3. Trouble-shooting.....   | 21 |
| 4. Transportation, storage and maintenance.....  | 22 |
| 4.1 Transportation.....  | 22 |
| 4.2 Storage .....  | 22 |
| 4.3 Maintenance .....  | 22 |
| 5. Camera/optical parameters.....  | 23 |
| 6. Declaration .....   | 23 |

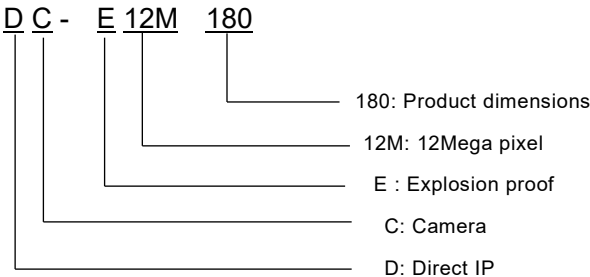
# 1. General

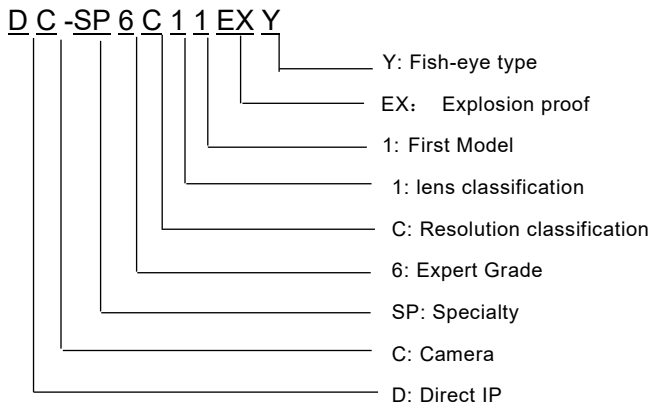
DC-□ Explosion-proof Fisheye Camera (hereinafter referred to as camera) is a new generation of Explosion-proof monitoring device, it adopts advanced manufacturing process, with a mature quality management system as a guarantee, the quality, performance and appearance are in leading position. The product can be used in flammable and explosive gas or flammable dust environment, to achieve the purpose of monitoring the hazardous area.

The camera is designed and manufactured according to EN IEC60079-0:2018, EN60079-1: 2014, EN60079-31: 2014, IEC60079-0: 2017, IEC60079-1: 2014, IEC60079-31: 2013. The compact structure, small size make it convenient for installation and maintenance. It's applicable for petrol industry, chemical industry, wharf, harbor, non-coal mine, aerospace industry, aircraft industry, military industry, food processing industry and so on.

ATEX certification : DNV 22 ATEX 29683X, IECEx certification : IECEx DNV 22.0024X.

## 1.1.Specification







Model : DC-□, DC-E12M180 , DC-SP6C11EXY

Ingress Protection Level:IP66,IP68(2m/2h)

Ex marking:

CE 2877  II 2 G Ex db op is II C T6 Gb  
 II 2 D Ex tb op is III C T80°C Db(with fill-light)

## 1.2. Characters

This camera integrated a variety of communication protocols and speed, it plays an important role in security systems.

This camera can work at wide voltage range and its self-adaptation function will satisfy most brands of the video camera. The surge protection device provided with the camera will make it safer and more reliable.

## 1.3. Scope

This product is applicable for Zone 1 and Zone 2 hazardous areas that explosive mixture of group IIA, IIB, IIC, T1~T6 gases, vapors and air may exists, Zone 21 and Zone 22 hazardous areas that explosive dust may exist

## 1.4. Mechanical parameters

|                              |                                    |
|------------------------------|------------------------------------|
| Material:                    | Stainless steel 304, 316 or 316L   |
| Automatic heating(optional): | Heating automatically below -10 °C |
| Weight(net):                 | DC-□:3.6kg                         |
| Weight(gross):               | DC-□:4.6kg                         |

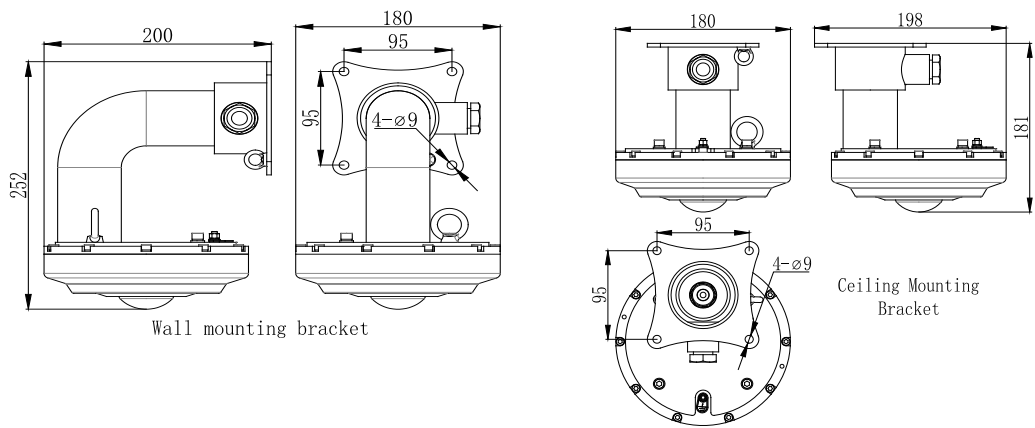


Figure 1.4.1 Dimensions of DC-□ Explosion-proof Camera

## 1.5. Electrical parameters

|                                 |  |
|---------------------------------|--|
| Voltage and current:            | 24V a.c.or 24V d.c. or 12V d.c. or PoE++(48V d.c.) |
|                                 | ≤1.5A  |
| Electrical connection:          | Composite cable                                    |
| Communication type              | RS-485   |
| Control communication speed:    | 2400~19200bps adjustable                           |
| Control communication Protocol: | PELCO-D/PELCO-P                                    |

|  |   |
|--|---|
| Fast Ethernet electrical signal interface(optional): | full duplex TCP/IP Protocol Ethernet interface transmission |
| Video signal (optional):                             | 1-way video output  |
| Audio(optional):                                     | 1-way input, 1-way output                                   |
| Alarm(optional)                                      | 7-way alarm input, 2-way alarm output                       |
| Address code:  | 0/1   |

## **1.6. Service condition**

|                      |                          |
|----------------------|--------------------------|
| Atmosphere pressure: | 80~110kPa                |
| Ambient temperature: | -40°C~+60°C              |
| Relative humidity:   | no more than 95% (+25°C) |

## **1.7. Electrical safety (in normal atmosphere)**

Insulation resistance: the insulation resistance between power terminal and the enclosure shall be no less than 50 MΩ;

Dielectric strength: dielectric test of 50Hz, AC1500V shall be conducted between power terminal and the enclosure for 1min; no breakdown or flash-over allowed.

## **1.8. Special conditions for safe use**

- Repairs of the flameproof joints must be made in compliance with the structural specifications provided by the manufacturer. Repairs must not be made on the basis of values specified in tables 3 and 4 of EN/IEC 60079-1;
- The fasteners which are relevant to the flameproof joint, its yield stress  $\geq 450\text{MPa}$ ;
- Engaged length and engaged threads are greater than values in IEC/EN 60079-1;
- The width of flameproof joint is more than the minimum values specified in EN 60079-1 standard. If needed, repair of the flameproof joints must only be made in compliance with the structural specifications provided by the manufacturer.
- The ambient temperature range is limited to -40°C~ +60°C.
- For group III application of fixed installation, the end user shall follow the guidance in the instruction manual to minimize the risk of electrostatic discharge for the products with non-metallic coating.
- The light-transmitting parts of this product have static electricity risk. When wiping lens parts of this product, it is necessary to ensure that it is carried out in a safe environment. Do not wipe with dry cloth.

## 2. Installation & debugging

### 2.1. Cautions before installation

- It's Prohibit customer to disassemble the camera. Otherwise dangerous;
- Check whether it has the explosion proof certificate;
- Check whether it has the explosion proof marking, it should fit the explosion proof environment;
- All explosion-proof parts have no cracks and defects affecting explosion-proof performance;

Cautions before installation

#### **Accessories in packaged product:**

- 1) DC-□ main set, 1pcs;
- 2) Wall mounting bracket or ceiling mounting bracket, 1pcs;
- 3) 4×M6×16 screws with flat washers and spring washers;  
(fix camera and mounting bracket)
- 4) 1×M6×12 lifting bolt; (fix camera and mounting bracket)
- 5) M6 inner hexagon spanner, 1pcs;
- 6) 5×M8×25 Outer hexagonal bolt(with spring washers, flat washers and nuts )
- 7) CoC, instruction manual (with ATEX/IECEx cert.), 1pcs for each;
- 8) Explosion-proof flexible conduit, optional□;
- 9) Safety rope



### **Cautions in service:**

- It's not suggested for users to dismantle this product at will, please follow the Instruction for operation.
- The power must comply with requirements specified in 1.5.
- Please use this product in conditions (atmosphere pressure, temperature and humidity) specified in chapter 1.6.
  
- Since Ex product is very special, debugging with power before installation if available.
- No extra load on the camera, extra load may cause malfunction or damage!
- After the inspection of the factory products are not allowed to change the part which has impact on explosion-proof performance.
- Internal and external grounding shall be reliable .The grounding wire resistance should be less than  $1\ \Omega$  . The ground resistance should less than  $1\ \Omega$  .

## **2.2. Preparation of supports before installation**

Since Ex product is very special, We suggest that it is better to do debugging with power before installation if available. After you are familiar with Ex product's operation, then do the site installation. The debugging is done before package, only installation in the intended location is required. We strongly suggest you select supports from IDIS, it will ease your installation process significantly.

It's the user's responsibility to ensure the support for the camera is strong enough, and the fasteners comply with associate load and anti-rust requirements. Installation of the camera shall ensure that it's out of reach by human beings and there is no other subject may affect the rotation of the camera; otherwise, falling or damage may happen, even personnel safety may be harmed.

### **2.2.1 Support installation**

After open package, select installation holes in proper positions for wall/ceiling mount bracket. The first step is to ensure the direction of the camera is correct, and then fasten the wall bracket with M8×25 Outer hexagonal bolt.

Junction box is always installed in positions that easy for installation and maintenance, as per Figure 2.2.1.1. The cable is connected to junction box by wire casings or bridges.

Specification of the support see Figure 2.2.1.2, 2.2.1.3.

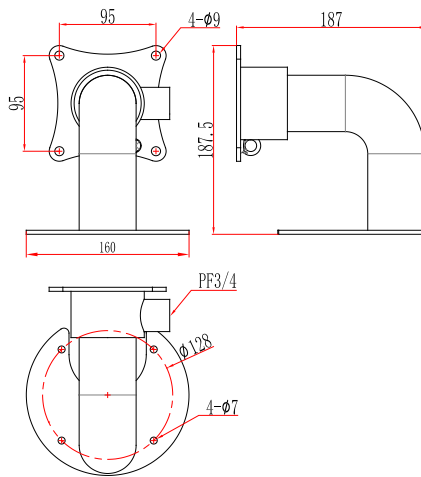
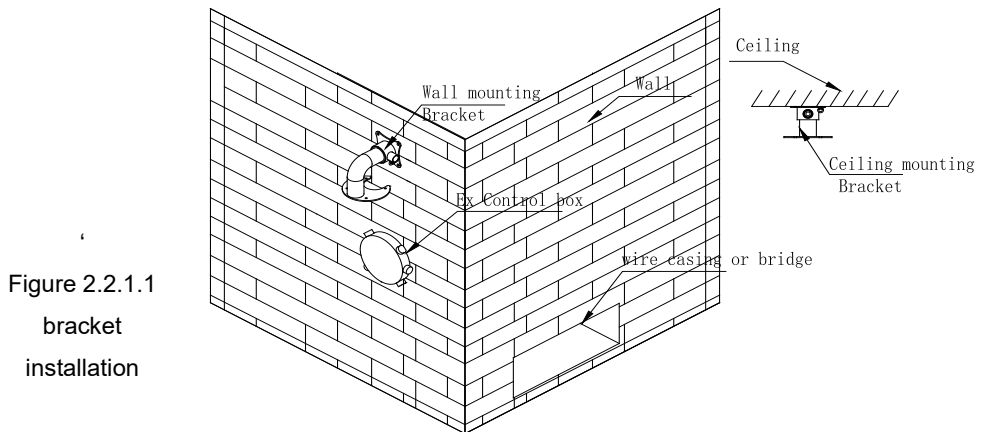


Figure 2.2.1.1 wall mounting bracket

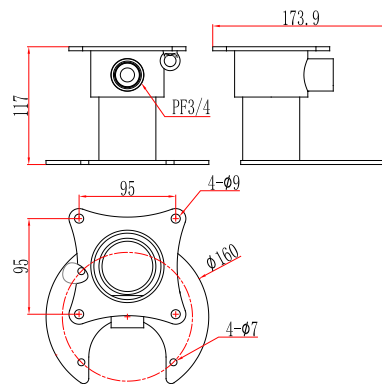


Figure 2.2.1.2 ceiling mounting bracket

## 2.3. On-spot installation and fixing

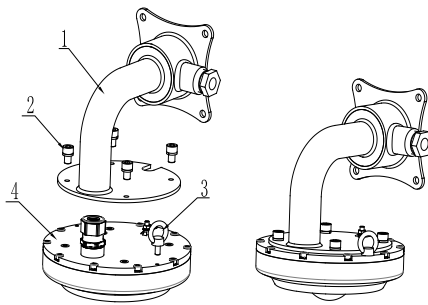
Since Ex product is very special, adjust with power indoors before installation in the intended locations if available.

### 2.3.1 Instruction for installation of camera and wall mounting bracket

Reference 2.2.1.2 for the bottom mounting hole position of the camera and 2.3.1.1 for the

mounting of the camera and the bracket.

- 1) Put the tail cable reserved by the camera through the cable hole on the mounting bracket;
- 2) Three M6\*16 internal hexagonal cylindrical head screw fixing brackets and camera;
- 3) fasten the M6 lifting bolt on the bottom mounting hole of bracket.



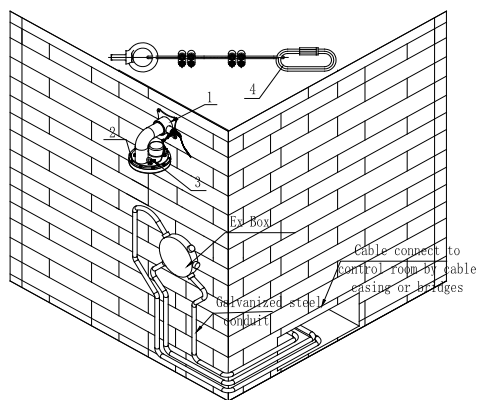
1. wall mounting bracket;
2. M6×16 Hexagon socket head combination screw;
3. M6 eye-bolt
4. DC-□-PL Overall unit

Figure 2.3.1.1 wall mounting bracket and camera

### 2.3.2 Instruction for installation of camera, wall mounting bracket and explosion-proof flexible conduit

Reference 2.3.2.1 for the bracket mounting, camera and flexible conduit

- 1) Firstly, the safety rope on the camera is hung on the safety hook of the installation bottom, reference 2.3.2.1 and 2.3.2.2;
- 2) Put the tail line reserved by the camera through the cable hole on the mounting bracket;
- 3) Put the tail line through the outlet hole of the bracket and connect it with the explosion-proof flexible conduit.



1.wall mounting bracket; 2.DC-□ overall unit; 3.safety rope; 4.latch  
Figure 2.3.2.1 camera and cable entry diagram

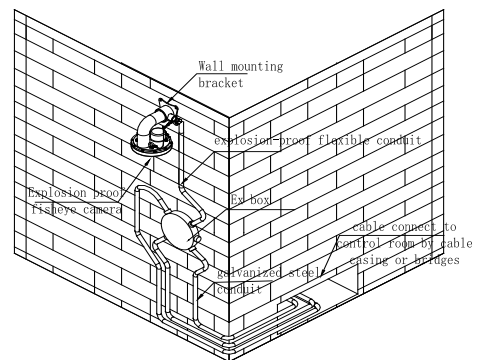


Figure 2.3.2.2 flexible conduit and cable entry diagram

### 2.3.3 Instruction for installation of camera and ceiling mount bracket

Reference 2.3.3.1 for the bottom mounting hole position of the camera and 2.3.3.2 for the mounting of the camera and the mounting bracket.

- 1) Put the tail cable reserved by the camera through the cable hole on the mounting bracket;
- 3) Three M6\*16 internal hexagonal cylindrical head screw fixing support and camera;
- 4) fasten the M6 lifting bolt on the bottom mounting hole of camera

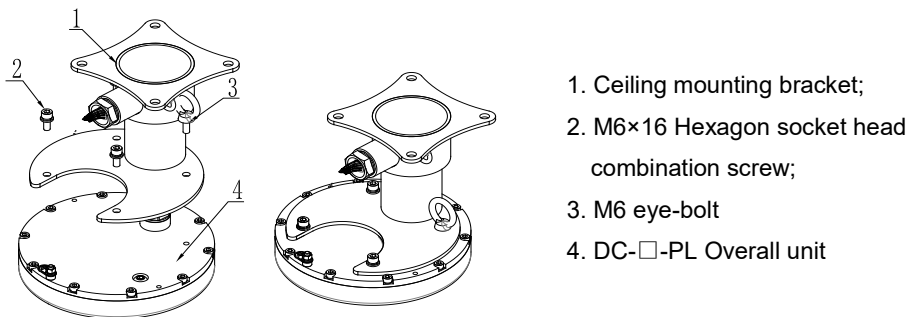


Figure 2.3.3.1 camera and ceiling mount bracket

### 2.3.4 Instruction for installation of camera, ceiling mounting bracket and explosion-proof flexible conduit

Reference 2.3.1.1 for the ceiling mounting bracket, camera and flexible conduit

- 1) Firstly, the safety rope on the camera is hung on the safety hook of the installation bottom, reference 2.3.4.1;
- 2) Put the tail line through the outlet hole of the ceiling bracket.

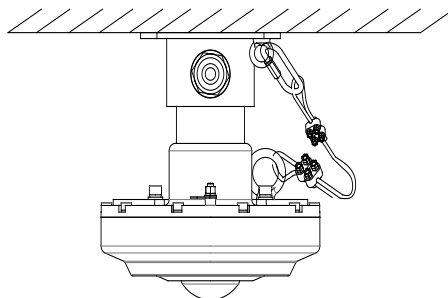


Figure 2.3.4.1 ceiling mounting bracket and camera

## 2.4 Adjusting and operation

### 2.4.1 System connection

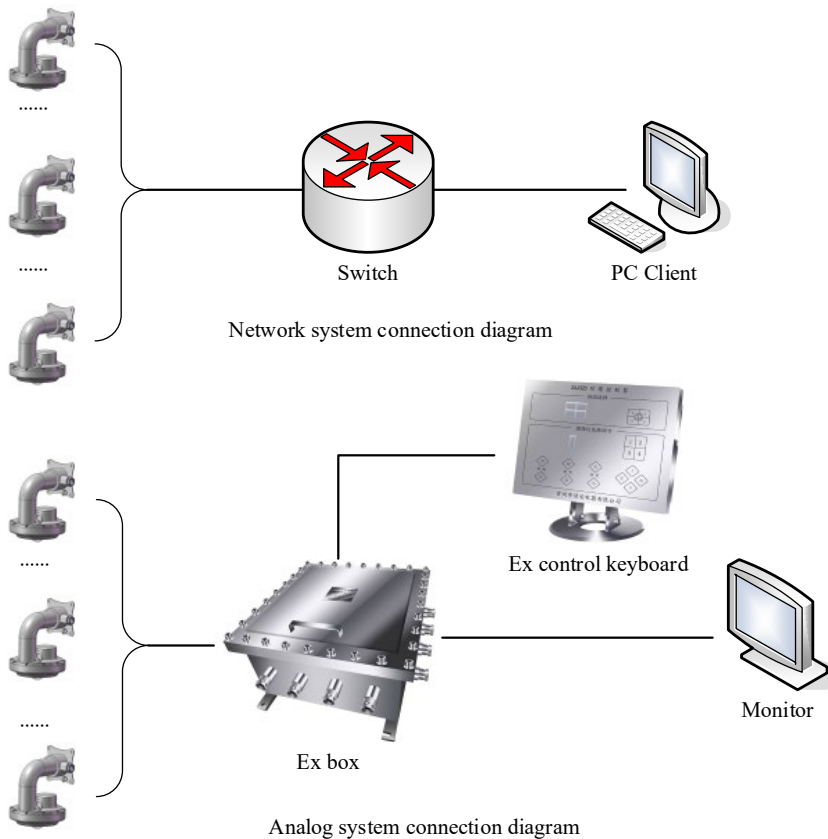


Figure 2.4.1 System connection

Network model device adopts cable network or wireless network as the main network for digital video signal transmission, it's available for users to monitor or record the videos at any time by network, no matter in local area network (LAN) or wide area network (WAN), such as internet. Analog system is controlled by Explosion-proof control keyboard and Explosion-proof control box, it's available for user to monitor the scene condition.

## 2.4.2 Cable specification

A composite cable is provided on packaged product (see Table 2.4.2 for cable specification), the cable is lead out from the side of the base bottom with minimum length of 2m; connect the composite cable to the system bus in the junction box before operation.

Table 2.4.2 Cable specification

| Part name                              | Color              | Function               |
|--|--------------------|------------------------|
| Alarm audio 485(optional)<br>Thin wire | purple             | Audio output           |
|  | black              | Audio grounding        |
|  | white-purple       | Audio input            |
|  | white-blue         | Alarm input 1          |
|  | Blue(thin)         | Alarm input 2          |
|  | White-brown        | Alarm input 3          |
|  | brown(thin)        | Alarm input 4          |
|  | White-red          | Alarm input 5          |
|  | red                | Alarm input 6          |
|  | gray               | Alarm input 7          |
|  | white-black        | Alarm input grounding  |
|  | orange             | Alarm output COM1      |
|  | white-orange       | Alarm output OUT1      |
|  | green              | Alarm output 2 (COM 2) |
|  | White-green        | Alarm output 2 (OUT2)  |
|  | yellow             | 485 output A           |
|  | white              | 485 output B           |
| Fast Ethernet<br>(PoE++)(twist pair)   | orange-white       | Network cable 1        |
|  | orange             | Network cable 2        |
|  | green-white        | Network cable 3        |
|  | blue               | Network cable 4        |
|  | blue-white         | Network cable 5        |
|  | green              | Network cable 6        |
|  | brown-white        | Network cable 7        |
|  | brown              | Network cable 8        |
| Video(optional)                        | 75-3 coaxial cable | Video -                |

|       |                    |               |                                      |
|-------|--------------------|---------------|--------------------------------------|
|       |                    | Video +       |                                      |
| Power | thick brown        | 100-240V a.c. | 24V a.c./d.c. or 12V+ d.c.(optional) |
|       | thick yellow-green | grounding     |                                      |
|       | thick blue         | 100-240V a.c. | 24V a.c./d.c. or 12V-d.c.(optional)  |

**The color of the cable depends on the configuration. The actual tail cable label shall prevail. The above colors are for reference only.**

### 2.4.3 Inspection and examination before power on

Check if the power and network cable are connected correctly, if the toggle switch settings are correct before power on.

### 2.4.4 Service status and inspection in service

The camera will start self-checking automatically after power on.

### 2.4.5 Settings of camera, IE browser and client software

See camera manufacturer's instruction manual for camera, IE browser and client software setting.

## 3. Trouble-shooting

| Phenomenon                           | Analysis   | Solution  |
|--------------------------------------|--|---|
| No image                             | No power supply  | Check the power supply  |
|                                      | Poor connection of video signal cable                                  | Check the video signal cable                                      |
| Cannot switch to night viewing model | Strong light in optical angle/<br>in manual night viewing switch model | Remove the strong light<br>Set to auto night viewing switch model |
| Unclear image                        | Camera is in manual focus model/ dust or stain on window               | Set to auto model/clear the window                                |
| Unstable image                       | Poor connection of video signal cable                                  | Check the video signal cable                                      |
|                                      | Bad connection of signal cable   | Check signal cable connection                                     |
|                                      | Signal attenuation caused by long distance                             | Use repeater to lengthen the communication distance               |
|                                      | Incorrect address  | Set according to instruction manual of                            |
|                                      | Incorrect protocol   |   |

|                     |                                    |        |
|---------------------|------------------------------------|--------|
|                     | Incorrect baud rate                | camera |
| Uncontrolled camera | Incorrect model of camera          |        |
|                     | Incorrect setting of control model |        |

## 4. Transportation, storage and maintenance

### 4.1 Transportation

The packaged product can be delivered in all modes of transportation but without direct rain or snow.

### 4.2 Storage

This product can be stored for one year in such environment: no corrosive substance, no obvious vibration, temperature range: 0°C~+40 °C and humidity no more than 90%.

### 4.3 Maintenance

- Six months after putting into service:
  1. Check all the fasteners;
  2. Inspect the cables ensure the protective sheath are not damaged and the cables will not affect other objects during rotation.
- Five years after putting into service: the rubber sealing ring need to be replaced if the camera was installed in severe conditions, please contact the local distributor for this work.



## 5. Camera/optical parameters

\* the following to models are typical options, other models are available after confirmation.

|   |  |
|---|--|
| Brand                                   | IDIS   |
| Model                                   | <b>DC-Y166CWRX</b>   |
| Sensor                                  | 1/2.3" CMOS  |
| Pixel                                   | 12 mega pixels   |
| Electronic shutter                      | Auto / Manual (1/30 ~ 1/10000), Anti-Flicker,<br>Slow Shutter (1/7.5, 1/15)  |
| Iris Control                            | Fixed Iris   |
| Day-night switch model                  | IR cut filter with auto switch   |
| Min. Illumination                       | Color : 0.1 lux @ F2.0 B/W : 0 lux (IR LED ON)   |
| Angular Field of View                   | 180°(H), 180°(V), 180°(D)  |
| Video compression                       | H.265, H.264 (MP), M-JPEG  |
| Audio compression                       | ADPCM 16K, G.726, G.711 u-Law, G.711 a-Law   |
| Primary bitstream<br>resolution and FPS | DirectIP™ Mode : 3200x2944, 800x736<br>Compatibility Mode : 3200x2944, 2400x2208, 3200x1472,<br>1600x1472, 1600x736, 800x736 |

## 6. Declaration

- We always tried to make this instruction manual as perfect as we can, but we can not include all the possible problems may raise in installation and maintenance, please contact us for detailed information on problems not included in this instruction manual.
- The operator or user shall be responsible for damages or losses caused by misuse or operations do not comply with this manual.

## ➤ Annex: Table of poisonous and harmful substances or elements



| Part name                 | 《Measures for the Administration of Pollution Control of Electronic Information Products》Substances or restriction element identification table |              |              |                     |                   |                                       |
|---------------------------|---|--------------|--------------|---------------------|-------------------|---------------------------------------|
|                           | Lead (Pb)   | Mercury (Hg) | cadmium (Cd) | chromium VI (Cr VI) | Polybromide (PPB) | Polybrominated diphenyl ethers (PBDE) |
| Metal part                | ×   | ○            | ○            | ○                   | ○                 | ○                                     |
| Plastic part              | ○   | ○            | ○            | ○                   | ○                 | ○                                     |
| PCB                       | ×   | ○            | ○            | ○                   | ○                 | ○                                     |
| Glass (if applicable)     | ○   | ○            | ○            | ○                   | ○                 | ○                                     |
| power (if applicable)     | ×   | ○            | ○            | ○                   | ○                 | ○                                     |
| Accessory (if applicable) | ×   | ○            | ○            | ○                   | ○                 | ○                                     |

**Remark:**

1. Symbol ○ means the content of the poisonous, harmful substances or elements in the component (homogeneous material) is lower than the limit specified in the standard;
2. Symbol × means the content of the poisonous, harmful substances or elements in the component (some certain homogeneous material) is more than the limit specified in the standard SJ/T11363-2006. Leakage or mutation of this poisonous, harmful substances or elements will not happen in the environmental life and will not harm the user's health or properties. Treatment of this poisonous, harmful substances or elements cannot be carried out by user selves, please deliver it to the appointed department according to the local laws or regulations or distributors of this product.



## After Service

Dear client:

Thank you for select our product, for your right and benefits please read and keep the quality guarantee card carefully.

Take the card you can have your product repaired free of charge in its quality guarantee period and favorable service after the quality guarantee period.

You can have the product replaced within 7 days due to quality problem and the quality guarantee period for this product is one year.

You can also get the favorable promotions.

In the following conditions the product is not considered within the quality guarantee scope:

- ◆ Client cannot bring forth the quality guarantee card and invoice or receipt of purchasing;
- ◆ Improper service conditions, such as unmatched power, ambient temperature, humidity or lighting caused malfunction;
- ◆ Malfunction caused by accident, negligence, disaster incorrect operation or network attack;
- ◆ Malfunction or damage in installation, repair, modification or dismantle caused by unauthorized personnel;
- ◆ Out of guarantee period.

If you have any dissent on technical service provided by distributor, please lodge a complaint to the customer's service center of IDIS.

The quality guarantee card will be validated only after it's stamped by the after-service provider.

Client: \_\_\_\_\_

Address: \_\_\_\_\_

TEL: \_\_\_\_\_ FAX: \_\_\_\_\_ ZIP CODE: \_\_\_\_\_

E-mail: \_\_\_\_\_

Model: \_\_\_\_\_

S/N: \_\_\_\_\_

Date of manufacture: \_\_\_\_\_(YYYY)\_\_\_\_\_(MM)\_\_\_\_\_(DD)

Date of purchase: \_\_\_\_\_(YYYY)\_\_\_\_\_(MM)\_\_\_\_\_(DD)

If you have any other suggestions or requirements please write down:



\_\_\_\_\_  
\_\_\_\_\_  
\_\_\_\_\_

Distributor: \_\_\_\_\_ TEL: \_\_\_\_\_

(Stamp)

### **EU DECLARATION OF CONFORMITY**

- 1) Product : Explosion-proof IR Fisheye camera
- 2) Manufacturer : IDIS Co., Ltd
- 3) Address : 1211, 16, Gasan digital 1-ro, Geumcheon-gu, Seoul, Republic of Korea
- 4) Base Model : DC-□  
Variant Model : DC-E5M180, DC-E6M180, DC-E12M180,  
DC-SP6C11EXY, DC-SP6D11EXY
- 5) ATEX Directive 2014/34/EU
- 6) Ex marking:

CE<sup>2877</sup>  II 2 G Ex db op is II C T6 Gb  
 II 2 D Ex tb op is III C T80°C Db(with fill-light)

EN IEC 60079-0:2018, EN 60079-1:2014, EN 60079-28:2015 and  
EN 60079-31:2014.

- 7) ATEX Notified Body and Quality Assurance Notified Body  
KSC POLAND Sp.zo.o. [Notified Body Number:2877]  
Chorzowska 150 40-101 Katowice  
Country : Poland

IDIS Co., Ltd.



**One Solution. One Company.**

#### **IDIS HQ**

IDIS Tower, 344 Pangyo-ro  
Bundang-gu, Seongnam-si  
Gyeonggi-do, 13493  
Republic of Korea

**T** +82 (0)31 723 5400  
**F** +82 (0)31 723 5100  
**E** [sales@idisglobal.com](mailto:sales@idisglobal.com)

#### **IDIS America**

801 Hammond Street  
Suite 200  
Coppell, TX 75019  
U.S.A.

**T** +1 469 444 6538  
**F** +1 469 464 4449  
**E** [sales\\_americas@idisglobal.com](mailto:sales_americas@idisglobal.com)

#### **IDIS Europe**

1000 Great West Road  
Brentford, Middlesex  
TW8 9HH  
The United Kingdom

**T** +44 (0)203 657 5678  
**F** +44 (0)203 697 9360  
**E** [uksales@idisglobal.com](mailto:uksales@idisglobal.com)

#### **IDIS Benelux**

De Slof 9  
5107 RH  
Dongen  
The Netherlands

**T** +31 (0)162 387 247  
**F** +31 (0)162 311 915  
**E** [sales@bnl.idisglobal.com](mailto:sales@bnl.idisglobal.com)

#### **IDIS Middle East**

P.O. Box 341037  
D-308, DSO HQ Bldg  
Dubai Silicon Oasis  
Dubai, U.A.E.

**T** +971 4 501 5434  
**F** +971 4 501 5436  
**E** [sales\\_mena@idisglobal.com](mailto:sales_mena@idisglobal.com)

IDIS and identifying product names and numbers herein are registered trademarks of IDIS Co., Ltd. All non-IDIS brands and product names are trademarks or registered trademarks of their respective companies. Product appearance, build status, and/or specifications are subject to change without notice.  
Copyright © IDIS Co., Ltd. All rights reserved.

For more information, please visit  
**[www.idisglobal.com](http://www.idisglobal.com)**