

IDIS Lite Series Camera Discovery and Registration in IDIS NVR

V1.0.1

Table of Contents

1 Prerequisite.....

2 Method.....

Version History

1 Prerequisite

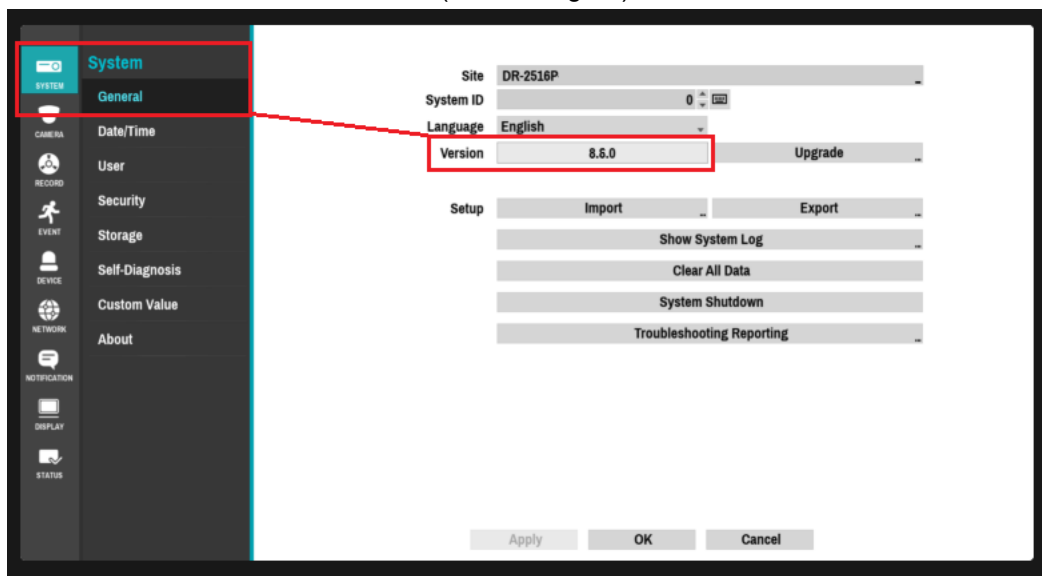
This user guide provides steps to discover and register IDIS Lite Series cameras with IDIS NVR's.

- IDIS Lite Cameras must be discovered and registered using IDIS Lite Protocol
- IDIS NVR models listed below with firmware version ≥ 8.8.0 or higher support IDIS Lite Protocol
- For the DR-25xx and DR-35xx Series NVR firmware, DR-65xx Series NVR firmware, and DR-85xx Series firmware, please visit the IDIS Global website, select the respective product, and download the firmware from there.

2 Method

A/ Check NVR Firmware and Upgrade if required

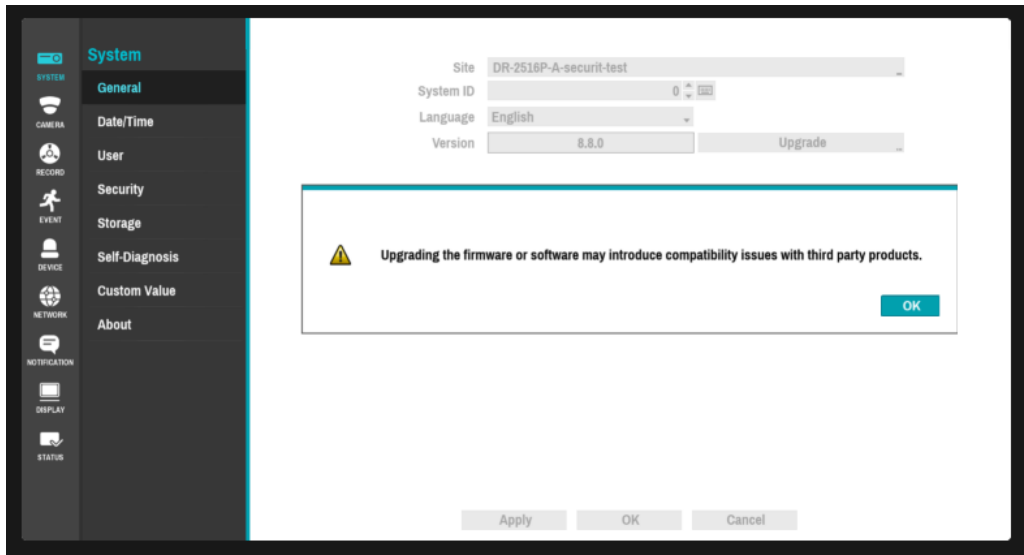
1. Login to the NVR using administrator credentials and navigate to Setup > System > General
Confirm the version of the NVR's firmware(8.8.0 or higher).



2. To upgrade the NVR's firmware, download the appropriate firmware for the NVR model, copy the firmware file to a USB Memory Stick and insert into one of the available USB sockets on the NVR, then while in Setup > System > General select "Upgrade" button as per screen above.
3. When the upgrade button is selected the following message will appear.

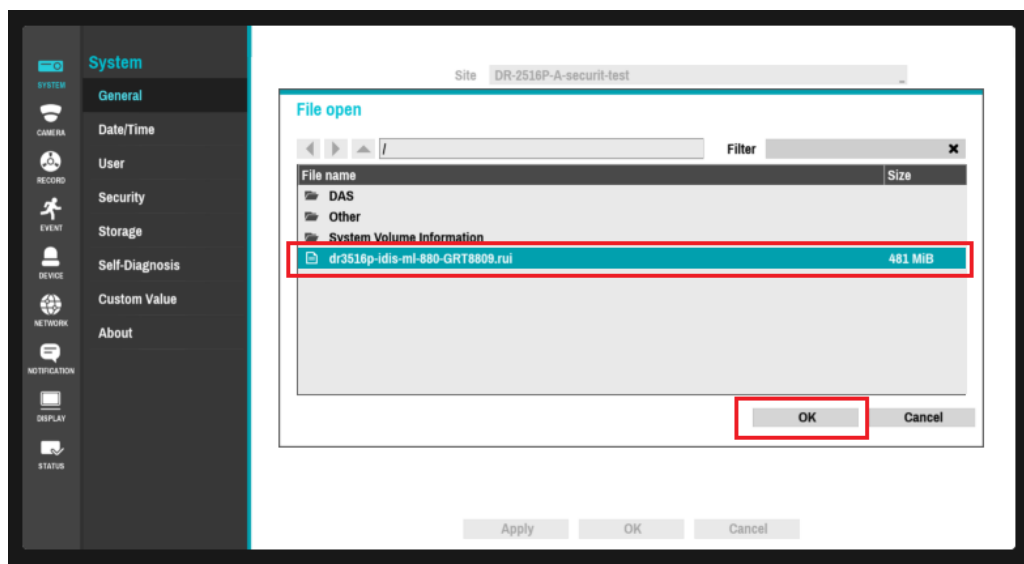
IMPORTANT NOTE:

Upgrading firmware of the NVR may cause existing 3rd Party Cameras (connected via ONVIF) to lose their existing connection and may not be able to re-establish connection once the upgrade is completed. Please carefully consider before upgrading.



If the IMPORTANT NOTE above does not apply to your system, to proceed, click OK to continue.

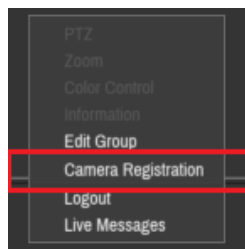
4. In the "File Open" dialog box select the firmware file as shown on screen below, click "OK" to continue and select YES and OK, until the firmware upgrade process begins.



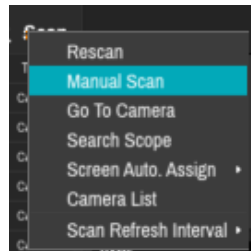
The firmware upgrade process will take around 3-4 min to complete.

B/ IDIS Lite Camera Registration

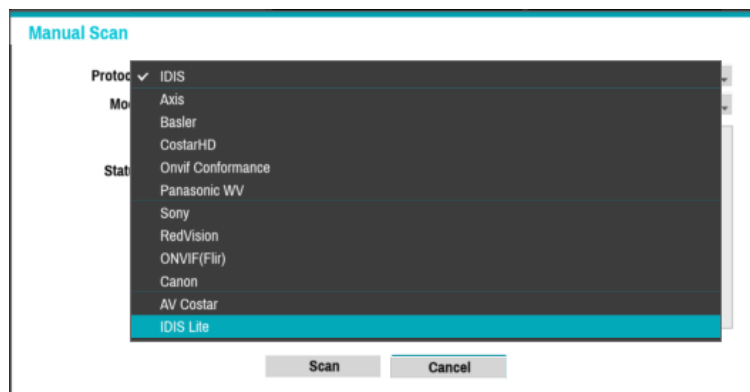
1. Navigate to the LIVE Video Display of the NVR, right click anywhere on the screen, and select "Camera Registration".



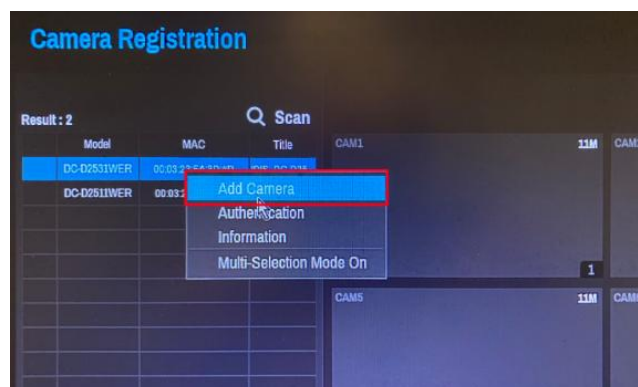
2. In the Camera Registration menu, click on "SCAN" then select "Manual Scan" to begin the camera discovery process.



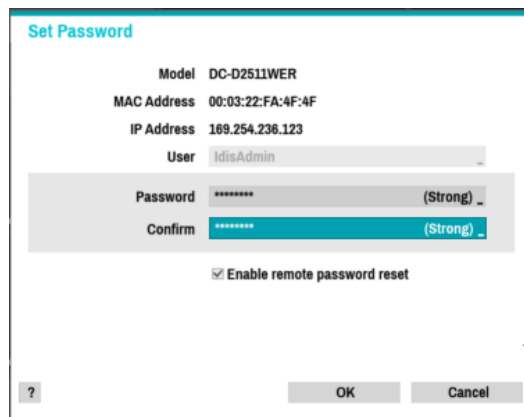
3. In the "Manual Scan" window select **Protocol > IDIS Lite** then select "SCAN"



4. During the scanning process the camera will appear on the **Result** list on the left, click "CANCEL" on the Manual Scan dialog box. Select the camera from the Result list on the left, then right click and select "Add Camera"



5. In the **Set Password** dialog box in the "Password" field, type a strong password then type the same password in the "Confirm" field.
You must have 1 x Upper Case, 1 x lower case, 1 x number and must have a minimum of 8 characters in the password > Example: IdisLitecam1



Set Password

Model DC-D2511WER
 MAC Address 00:03:22:FA:4F:4F
 IP Address 169.254.236.123
 User idisAdmin

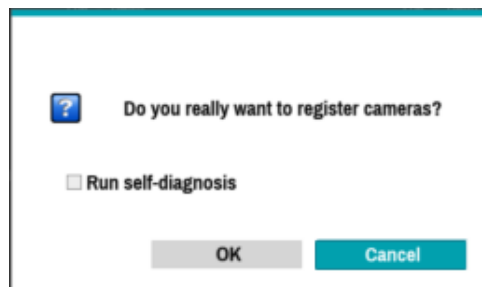
Password ***** (Strong) ..
 Confirm ***** (Strong) ..

☒ Enable remote password reset

? OK Cancel

Once completed click OK (refer screen above)

6. Once the password is accepted, a video image of the camera will populate a vacant video quadrant on the NVR's camera registration page. Appearance of the video image of the camera is a visual verification of a successful camera registration.
7. Click "APPLY" at the bottom of the Camera Registration page. The "Run self-diagnostic" checkbox will be ticked by default. You can untick this to speed up the registration process. Click OK at this final dialog box to apply and register the camera to the NVR.



? Do you really want to register cameras?

☐ Run self-diagnosis

OK Cancel

For additional NVR configuration please refer to the Operation Manual of the NVR. These can be found on the IDIS website > <https://www.idisglobal.com> listed under PRODUCTS > NETWORK RECORDERS.

Version History

Version	Remarks
1.0.5	Remove the firmware link and replace it with an explanation.
1.0.4	Annotated document for IDISGLOBAL.com publication
1.0.3	Provided copy of this document to IDIS to review and add to IDISGLOBAL.com
1.0.2	Annotated Section A/ step 3 - 3rd Party Camera connection
1.0.1	Revised, minor changes made to steps in Section A
1.0.0	Initial Release