



One Solution. One Company.

# Thermal Network Camera

## Quick Guide

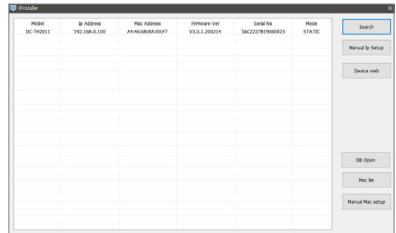
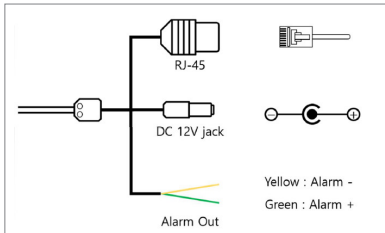
DC-TH Series



## NVR Registration

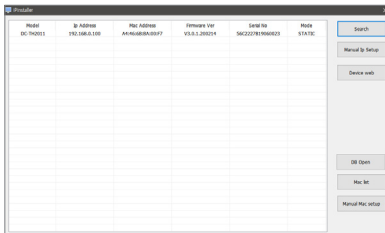
1. Supply power to the camera using 12V input or POE cable. Synchronize the network same as the computer.

2. Run IP installer and select Search button to scan the thermal camera with the same network. (Camera default IP address: 192.168.0.100. Set the computer with the same e.g.) 192.168.0.10)

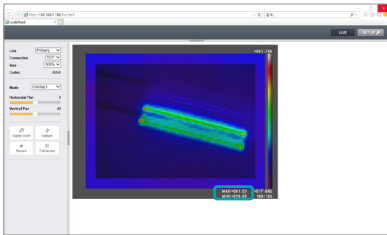


3. Select the camera and click Device web. (You can access directly by entering 192.168.0.100 without IP installer)

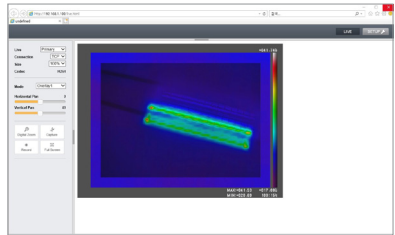
4. Enter the camera ID and Password (Default : admin / Thermal#)



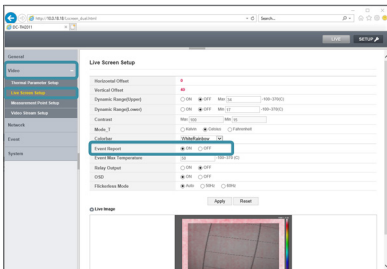
5. Set the camera to allow people to have the highest temperature and check the temperature at the bottom right when person is detected from one meter distance.



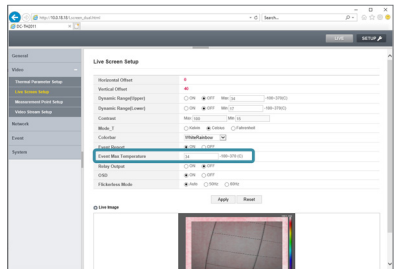
6. Select SETUP button.



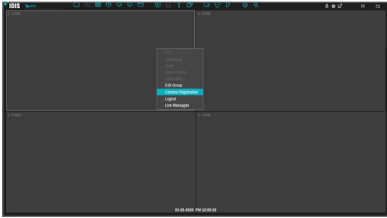
7. Enter Video - Live Screen Setup, and set Event Report [ON]



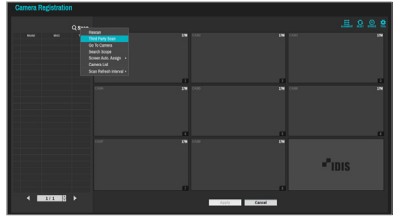
8. Click Event Max Temperature and enter the temperature of 2°C higher than the person identified in 5. (e.g. in environment where a person is detected at 32°C, set the upper alarm limit to 34°C.)



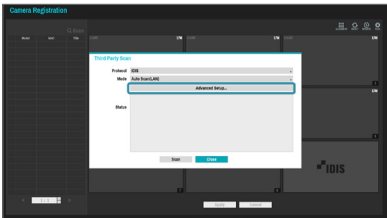
9. Connect the camera to the NVR and select camera registration by clicking on the right mouse button.



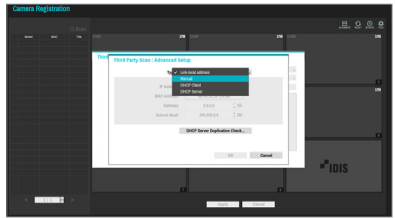
10. Scan - Select Third Party Scan.



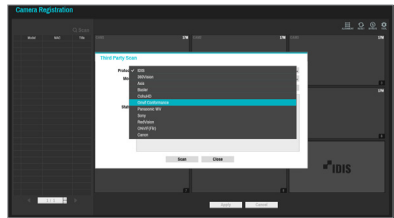
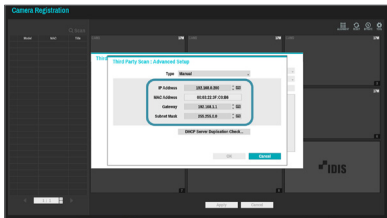
11. Select Advanced Setup.



12. Change the mode to Manual.

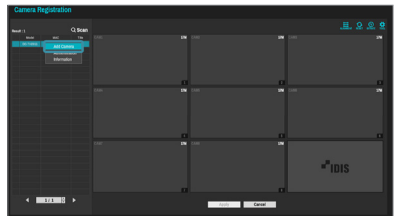
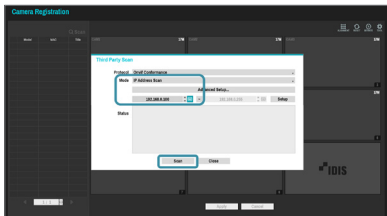


13. Set the same network address with NVR and camera.  
 (If camera IP address is 192.168.0.100,  
 set NVR IP address 192.168.0.200)
14. Select Onvif Comformance Protocol.



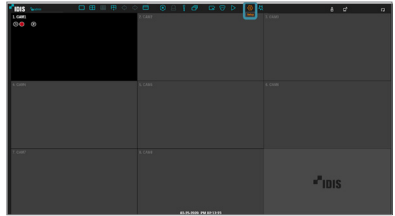
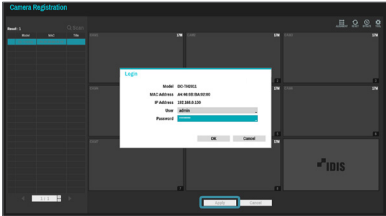
15. Select IP address mode , enter camera IP address and scan.  
 (If camera IP address is set as default ,  
 enter 192.168.0.100).

16. If scan is done, close Third Party Scan,  
 right click and select add camera.

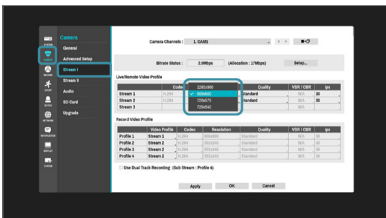


17. Enter camera ID and password, then camera is registered and live view is available. Select Apply button and camera registration is done. (Default : admin /Thermal#)

18. Select the Setting.

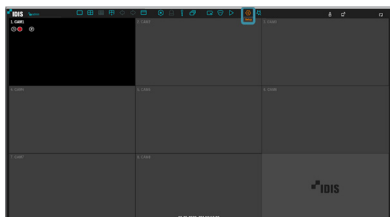


19. Camera - Set the stream 1 resolution 800 x 600 and apply. (1280x1024 with DC-TH2012WR)

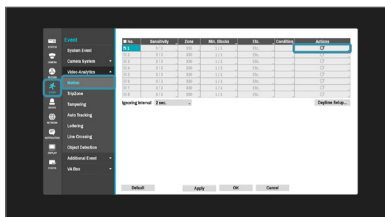


## Temperature MAX Alarm Setting

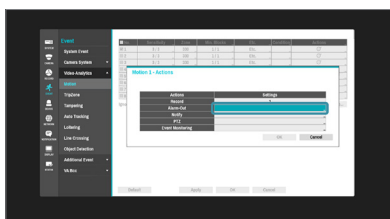
1. Select the Setting.



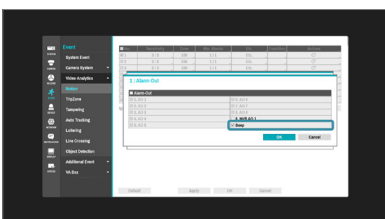
2. Enter Event - Video Analysis - Motion, select Actions



3. Select the Alarm out.



4. Select Beep, click ok and apply. NVR triggers beep sound when temperature is detected.





**One Solution. One Company.**

IDIS and identifying product names and numbers herein are registered trademarks of IDIS Co., Ltd. All non-IDIS brands and product names are trademarks or registered trademarks of their respective companies. Product appearance, build status, and/or specifications are subject to change without notice. Copyright © IDIS Co., Ltd. All rights reserved.

For more information, please visit  
[www.idisglobal.com](http://www.idisglobal.com)