



One Solution. One Company.

Thermal Network Camera

Quick Guide

How to set Temperature Detection

DC-TH Series



1. How Thermal Image is Displayed

IDIS Thermal Camera Provide 10 pallet. Thermal images are shown as per colors provided in the pallet.



Screen with 'WhiteRainbow' pallet. Color of thermal image is displayed from range of the pallet -from the color on the top is the highest temperature to the lowest temperature's color at the pallet's bottom. The highest temperature of the pallet with color which is 34°C. The lowest one of the pallet is violet, 17°C. Color between 17°C and 34°C are displayed by colors between white and violet.

2. Setting up Dynamic Range (Upper / Lower)

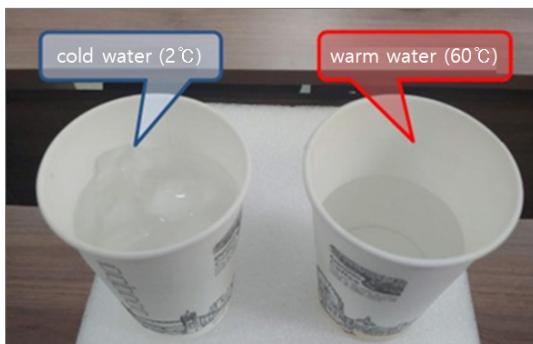
You can setup highest/lowest temperature in pallet with fixed value or select dynamic range with Dynamic Range [ON] option. According to the purpose of detection or type of object being detected, dynamic range with upper and/or lower temperature option can be selected.

Dynamic Range(Upper)	<input checked="" type="radio"/> ON <input type="radio"/> OFF	Max <input type="text" value="34"/>	-100~370(C)
Dynamic Range(Lower)	<input type="radio"/> ON <input checked="" type="radio"/> OFF	Min <input type="text" value="17"/>	-100~370(C)

- Dynamic Range (Upper) : ON (No fixed Value, Colors are chosen / Updated as per the highest temperature in the frame)
- Dynamic Range (Lower) : OFF 17°C (17°C is fixed to the lowest temperature / Color in the pallet)

3. Dynamic Range On/Off Test

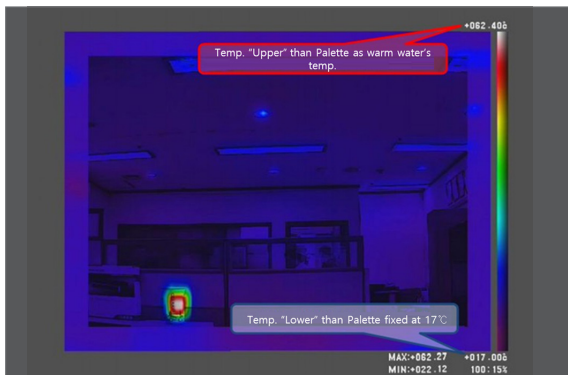
Using Dynamic range options, color change of two cups, containing warm water (60°C) and cold water (2°C) is compared.



Default 1

- Dynamic Range (Upper) : ON
- Dynamic Range (Lower) : OFF

Dynamic Range(Upper)	<input checked="" type="radio"/> ON	<input type="radio"/> OFF	Max 34	-100~370(C)
Dynamic Range(Lower)	<input type="radio"/> ON	<input checked="" type="radio"/> OFF	Min 17	-100~370(C)



White color is displayed on the cup with 62°C temperature - the highest one in the pallet.
 The minimum temperature of the pallet, 17°C, is displayed in purple at the bottom of the pallet.
 Colors between 62°C and 17°C are represented by colors between white and purple to match the ratio of 45°C difference.

Default 2

- Dynamic Range (Upper) : OFF
- Dynamic Range (Lower) : ON

Dynamic Range(Upper)	<input type="radio"/> ON	<input checked="" type="radio"/> OFF	Max 40	-100~370(C)
Dynamic Range(Lower)	<input checked="" type="radio"/> ON	<input type="radio"/> OFF	Min 17	-100~370(C)

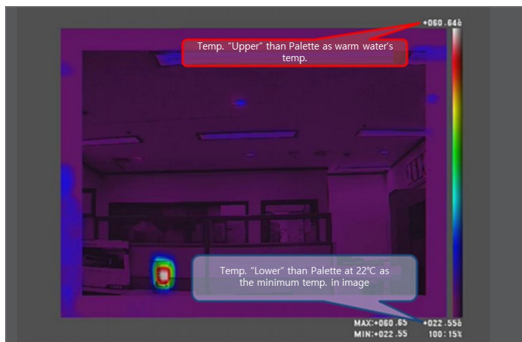


The maximum temperature of the palette, 40°C, is displayed in white, the top color of the palette, and the minimum temperature of 2 , in the palette, is purple. Colors between 40°C and 2°C are represented by colors between white and purple to match the ratio of 38°C difference.

Default 3

- Dynamic Range (Upper) : ON
- Dynamic Range (Lower) : ON (Warm water cup)

Dynamic Range(Upper)	<input checked="" type="radio"/> ON	<input type="radio"/> OFF	Max 40	-100~370(C)
Dynamic Range(Lower)	<input checked="" type="radio"/> ON	<input type="radio"/> OFF	Min 17	-100~370(C)

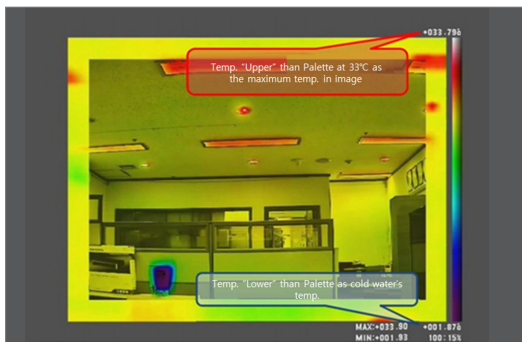


The maximum temperature of the pallet, 62°C, is displayed in white, the top color of the palette, and the minimum temperature of 22°C, the palette, is displayed in purple, the lowest color of the palette. Colors between 62°C and 22°C are represented by colors between white and purple to match the ratio of 40°C difference.

Default 4

- Dynamic Range (Upper) : ON
- Dynamic Range (Lower) : ON (Cold water cup)

Dynamic Range(Upper)	<input checked="" type="radio"/> ON <input type="radio"/> OFF	Max <input type="text" value="40"/>	-100~370(C)
Dynamic Range(Lower)	<input checked="" type="radio"/> ON <input type="radio"/> OFF	Min <input type="text" value="17"/>	-100~370(C)



The maximum temperature of the pallet, 33°C, is displayed in white, the color at the top of the pallet, and the minimum temperature of 22°C, the pallet, is displayed in purple, the color at the bottom of the pallet. The color between 33°C and 22°C is represented by the color between white and purple to match the ratio of 11°C difference.

Default 5

- Dynamic Range (Upper) : OFF (70°C)
- Dynamic Range (Lower) : ON (0°C)

Dynamic Range(Upper)	<input type="radio"/> ON <input checked="" type="radio"/> OFF	Max <input type="text" value="70"/>	-100~370(C)
Dynamic Range(Lower)	<input type="radio"/> ON <input checked="" type="radio"/> OFF	Min <input type="text" value="0"/>	-100~370(C)



The maximum temperature of the pallet, 70°C, is displayed in white, the top color of the pallet, and the minimum temperature of 0°C, the pallet, is displayed in purple, the lowest color of the pallet. Colors between 70°C and 0°C are represented by colors between white and purple to match the ratio of 70°C difference.

4. Tips

- 1** · Dynamic Range (Top) : ON
· Dynamic Range (Bottom) : OFF

When the temperature in the space or subject to measure the temperature remains the same, when monitoring the highest temperature.

- 2** · Dynamic Range (Top) : OFF
· Dynamic Range (Bottom) : ON

When measuring the temperature or the temperature of the subject, the highest temperature remains the same.

- 3** · Dynamic Range (Top) : ON
· Dynamic Range (Bottom) : ON

When there is not much difference between the highest and lowest temperatures in the space or subject to measure the temperature.

- 4** · Dynamic Range (Top) : OFF
· Dynamic Range (Bottom) : OFF

When there is no sudden change in the maximum and minimum temperatures, and when a specific temperature is expressed in a specific color.



One Solution. One Company.

IDIS and identifying product names and numbers herein are registered trademarks of IDIS Co., Ltd. All non-IDIS brands and product names are trademarks or registered trademarks of their respective companies. Product appearance, build status, and/or specifications are subject to change without notice. Copyright © IDIS Co., Ltd. All rights reserved.

For more information, please visit
www.idisglobal.com