

# Algeria's oil giant invests in advanced IDIS video solution to safeguard its upstream infrastructure



## Industry

Oil & Gas

## Customer

ENTP, Sonatrach

## Region

Algeria

## IDIS Partner

EPE RETELEM SPA

## Background

### Video upgrade to ensure continuing safe operations across 69 locations



ENTP, part of Algeria's state-owned oil company Sonatrach Group, supplies essential petrochemicals domestically and internationally. Sonatrach's operations are

essential to the country's energy security and are a key part of Algeria's critical national infrastructure.

To keep up with evolving risks and ensure continued safe and efficient operating practices, ENTP planned a major upgrade project, ENTP EYES, to modernise and expand video surveillance and take advantage of the latest advances in AI-powered video analytics.

ENTP's objectives included ensuring a fast, efficient response to incidents, improving preventative maintenance, and achieving the safest working conditions with near-incident detection.

Specialist integration contractor EPE RETELEM SPA was challenged to deliver the upgrade at almost 70 geographically dispersed wells and drilling facilities, as well as at ENTP's headquarters.

## Challenges

### System upgrade aims to take advantage of next-generation VMS and analytics

An upgraded solution was needed to leverage the latest IP video functionalities – including AI analytics and more powerful VMS – and ensure long-lasting, optimum camera performance and image quality even in harsh operating environments.



As part of the upgrade, ENTP also wanted to significantly expand coverage, remove surveillance blind spots, and improve resilience with failover to protect

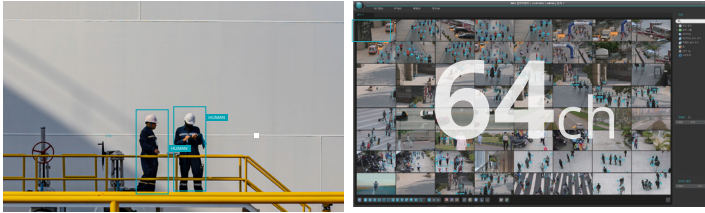
against a range of fault conditions. With extra coverage and higher image quality, ENTP also knew it needed to increase and optimise video data storage capacity but wanted to do this without significantly increasing operating costs.



To address these and other priorities – including demanding project timelines and the need for minimal disruption and system downtime during implementation - EPE RETELEM SPA recommended an end-to-end solution from IDIS.

# Solution

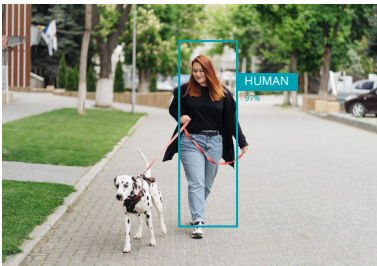
IDIS allows complete infrastructure upgrade with minimal downtime and disruption



- IDIS Solution Suite feature-rich, intuitive VMS software utilising the latest version of IDIS Deep Learning Analytics (IDLA)
- IDLA significantly reduce false alarms with accurate threat detection with AI-powered alerts and notifications.
- IDIS Federation Services efficiently enables centralised management of cameras across 69 sites.
- IDIS's H.265+ technology optimises storage and minimises network strain.
- Intrinsically safe ATEX-rated and explosion-proof cameras; and IDIS's superior wide-angle and fisheye cameras that eliminate blind spots.
- Easy integration of third-party technology, including legacy equipment.
- IDIS centralised management allows remote access including live-view, playback, footage retrieval and camera configuration, while the IDIS Mobile Plus app puts IDIS's enterprise-class VMS at remote workers' fingertips to ensure real-time security and safety management while on the move.



## IDIS AI Solutions



**False Alarm Reduction**



**IDIS Deep Learning Engine**

# Results and benefits

Central monitoring solution enhances safety and security at upstream oil sites and integrates widely dispersed facilities in just three months



IDIS plug-and-play DirectIP® technology minimised installation time and further reduced costs, with assured instant and seamless operability of all devices and video management software. The scalable IDIS Solution Suite



VMS is easy to use, with remote diagnostics has eliminated the maintenance burden and ongoing annual license fees associated with conventional video solutions to ensure a low total cost of ownership. IDIS advanced AI-powered analytics now support security staff with accurate 24/7 alerts and notifications to ensure detection and a rapid response every time potential risk events occur.

*" Our IDIS video solution, delivered by EPE RETELEM SPA, assures us of complete domain awareness across our operations. It has further enhanced our response capabilities with advanced, automated detection and the latest h,gnly accurate AI analytics functions "*

*Mustapha Mehessim  
Spokesperson, ENTP*



One Solution. One Company.

### IDIS HQ

IDIS Tower, 344 Pangyo-ro  
Bundang-gu, Seongnam-si  
Gyeonggi-do, 13493  
Republic of Korea

T +82 (0)31 723 5400  
F +82 (0)31 723 5100  
E sales@idisglobal.com

### IDIS America

801 Hammond Street  
Suite 200  
Coppell, TX 75019  
U.S.A.

T +1 469 444 6538  
F +1 469 464 4449  
E sales\_americas@idisglobal.com

### IDIS Europe

1000 Great West Road  
Brentford, Middlesex  
TW8 9HH  
The United Kingdom

T +44 (0)203 657 5678  
F +44 (0)203 697 9360  
E uksales@idisglobal.com

### IDIS Benelux

De Slof 9  
5107 RH  
Dongen  
The Netherlands

T +31 (0)162 387 247  
F +31 (0)162 311 915  
E sales@bnl.idisglobal.com

### IDIS Middle East

P.O. Box 341037  
D-308, DSO HQ Bldg  
Dubai Silicon Oasis  
Dubai, U.A.E.

T +971 4 501 5434  
F +971 4 501 5436  
E sales\_mena@idisglobal.com